



INSTRUCTION FOR USE

FORESIGHT 45 FIXED BACK END
Item code: FS-45S



Read this manual before use. Keep it in a safe place for future reference.

WARNING

Federal (US) law restricts the use of this device to licensed professionals.

1. Only use burs of reputable manufacturers with a shaft diameter of 1.59/1.60mm (.0625/.0629"), a total length of max. 26mm (1.02"), and head diameters of up to 2mm (.0787"). Burs which deviate from the stated measurements must not be used
2. Before each use, make sure that the bur is not bent or damaged.
3. Before each use, make sure that the bur is correctly seated and locked in the chuck.
4. Do not run the handpiece without a bur or bur blank locked in the chuck.
5. When handpiece becomes noisy or sluggish after extended length of use, replace with a new turbine.
6. Do not push the head cap button during rotation.

SPECIFICATIONS

MODEL	FORESIGHT 45 FIXED BACK END
Operating Air Pressure	35-40 psi.
Speed	400,000 rpm Min.
Weight	69.8g
Head Height	13.6mm(.535")
Head Diameter	10.61mm (.418")
Bur Type(length)	Surgical Length
Coupling Type	Fixed Back End
LED Power	Self-Generated

1. Installation

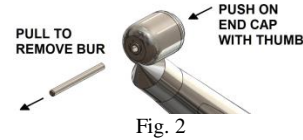
Follow (Fig. 1) below to install the handpiece.



2. Changing Bur

Bur removal

Push on end cap with thumb to click, and remove the bur (Fig. 2)



Bur mounting

Push on end cap and insert the bur into the head until it stops (5mm deep approx.) release pressure on button bur should be secure. Firmly tug on the bur to insure that it is properly secured.

Caution: Always insert the bur full length of the chuck. If you attempt to extend it from the chuck, the bur may dislodge during use and cause injury to you or your patients.

3. Cartridge Replacement

Removing cartridge (Fig. 3&4)

Mount a bur in the chuck. Turn the head cap counter-clockwise with the cap wrench (Fig. 3), and remove the head cap. Push on the bur and the cartridge is easily removed from the back of the head (Fig. 4). Clean inside the handpiece head with spray lubricant.

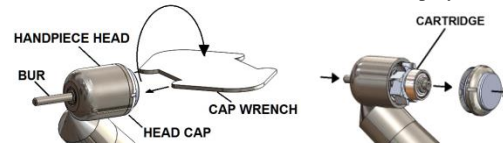


Fig. 3

Fig. 4

Mounting Cartridge (Fig. 5&6)

Check for all components inside head (Fig. 5)

Gently insert the rear end of Cartridge into the Head-Cap, then hold the Cartridge by the Head-Cap, bring Head of handpiece down over the top of the chuck pin and thread the Head-Cap into the Head of handpiece, as shown on (Fig. 6)

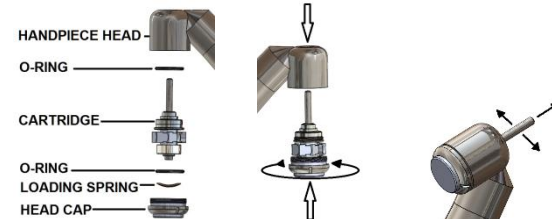


Fig. 5

Fig. 6

Fig. 7

Continue to hand-thread the Head-Cap until almost flush to the last thread. Then, pull and wiggle the chuck pin into the bottom of the Head to properly seat the cartridge. (Fig.7). further tighten the Head-Cap with Cap-Wrench

4. Cleaning & Lubrication

1. Remove the handpiece from the coupling.
2. Insert bur into the chuck of the handpiece and secure.
3. Remove any adherent material using only a soft cloth, soft brush, gauze, or cotton swab that has been immersed in a soapy solution. Do not use a wire brush. Wipe and dry thoroughly. Do not use ultrasonic bath, nor immerse the handpiece in water or any solution.
4. Use needle to remove any debris that may clog the spray hole (Fig. 8)

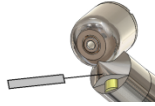


Fig. 8

5. For Fixed Back End Handpiece: Insert nozzle tip into air drive tube on the back end of the handpiece and spray for approximately 3 seconds. (Fig. 9)



Fig. 9

6. Fully depress the button of the end cap and hold the collet open then plunge the bur in and out several times to distribute the cleaner into the chucking mechanism. Fully insert the bur, release the pressure on end cap button to secure the bur. Rotate the bur back and forth between your fingers to further distribute the cleaner & lubricant in the head of the handpiece to help loosen any debris.

7. Attach handpiece to an air supply to operate the handpiece. Before applying any air pressure, position the head of the handpiece within a paper towel cupped in one hand. Operate the handpiece to purge the debris and excess cleaner onto the towel. Repeat steps 5 & 8 until the expelled fluid is completely clear. Then continue to operate the handpiece until all excess cleaner is expelled (approx. 5 to 10 seconds of continuous operation). The handpiece is ready for sterilization.

5. Sterilization

1. Remove the bur, wipe external surface with a dry towel to remove any expelled fluid or debris.
2. Insert the handpiece in a sterilization pouch. Seal the pouch. Bag individually.
3. Steam autoclave for 15 minutes at 132°C (270°F) in a Gravity Autoclave machine following manufacturer's instructions.
4. Use a minimum 20 minutes for drying cycle.

6. Warranty

This product is designed for use in a dental office and this warranty is not applicable to other uses. The unit is warranted against manufacturing defects in materials and workmanship for **1 year** from the date of purchase: **Medidenta** will repair or replace the unit at its sole discretion. This warranty shall be limited to replacement repair of the unit or its parts and shall not extend to any other claims, including but not limited to loss of profit, cost of removal or replacement, incidental or consequential damages or other similar claims arising from use of this product. This handpiece has internal generator that produces the necessary power for the LED on the handpiece tip. **Damage to the product including the internal generator resulting from acts of God, faulty installation, misuse, tampering, accident, abuse, negligence, alterations, unauthorized or problems unrelated to materials and workmanship are not covered by this warranty.**

7. Repair

Provide the following information for your repair:

Complete name, address and phone #

Nature of repair

Send to:

Medidenta

3325 W Ali Baba Lane

Suite 603

Las Vegas, NV 89118

Tel: 800-221-0750

8. Replacement parts

Item code - Description

T-FSM45 - Foresight Mini / 45 Cartridge

P-FS45CW - Foresight Mini / 45 Cap Wrench

P-FS45HC - Foresight Mini / 45 Head Cap

ISPRAY - Handpiece Cleaner / Lubricant